



Well Data

Carnarvon Basin / Roebuck Basin

September releases:-

A) basic data

Coniston-15H/L1 L2 (not yet released)

B) interpretive data

Stag-38 & 39

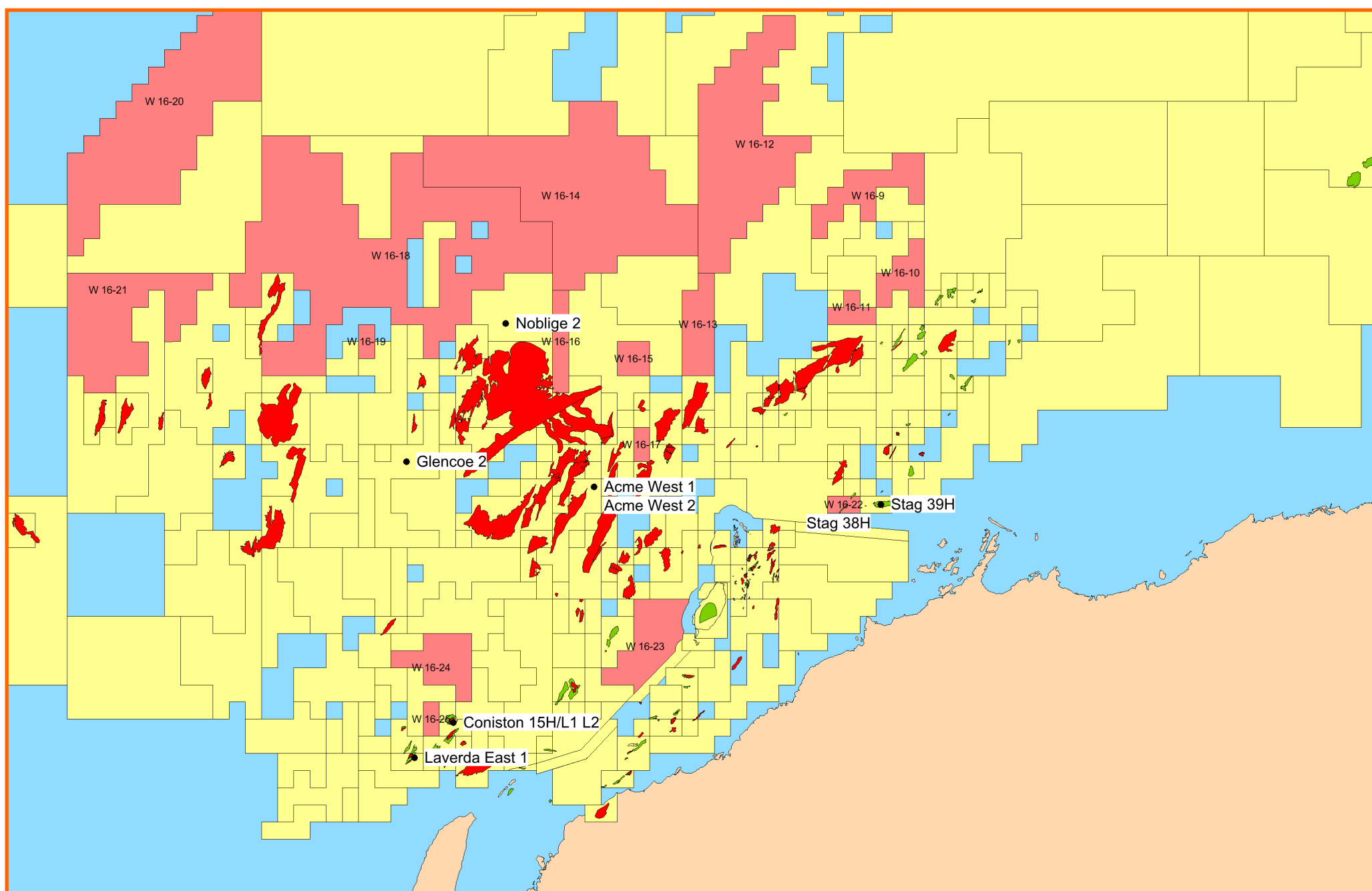
October releases:-

A) basic data

None

B) interpretive data

Glencoe-2 (02/10/2016)
Noblige-2 (05/10/2016)
Laverda East-1 (16/10/2016)
Acme West-1 & 2 (16/10/2016)



Browse / Bonaparte Basins

September releases:-

A) basic data

Lasseter-1/ST1

B) interpretive data

Argus-2/ST1
Cash-2 (not yet released)

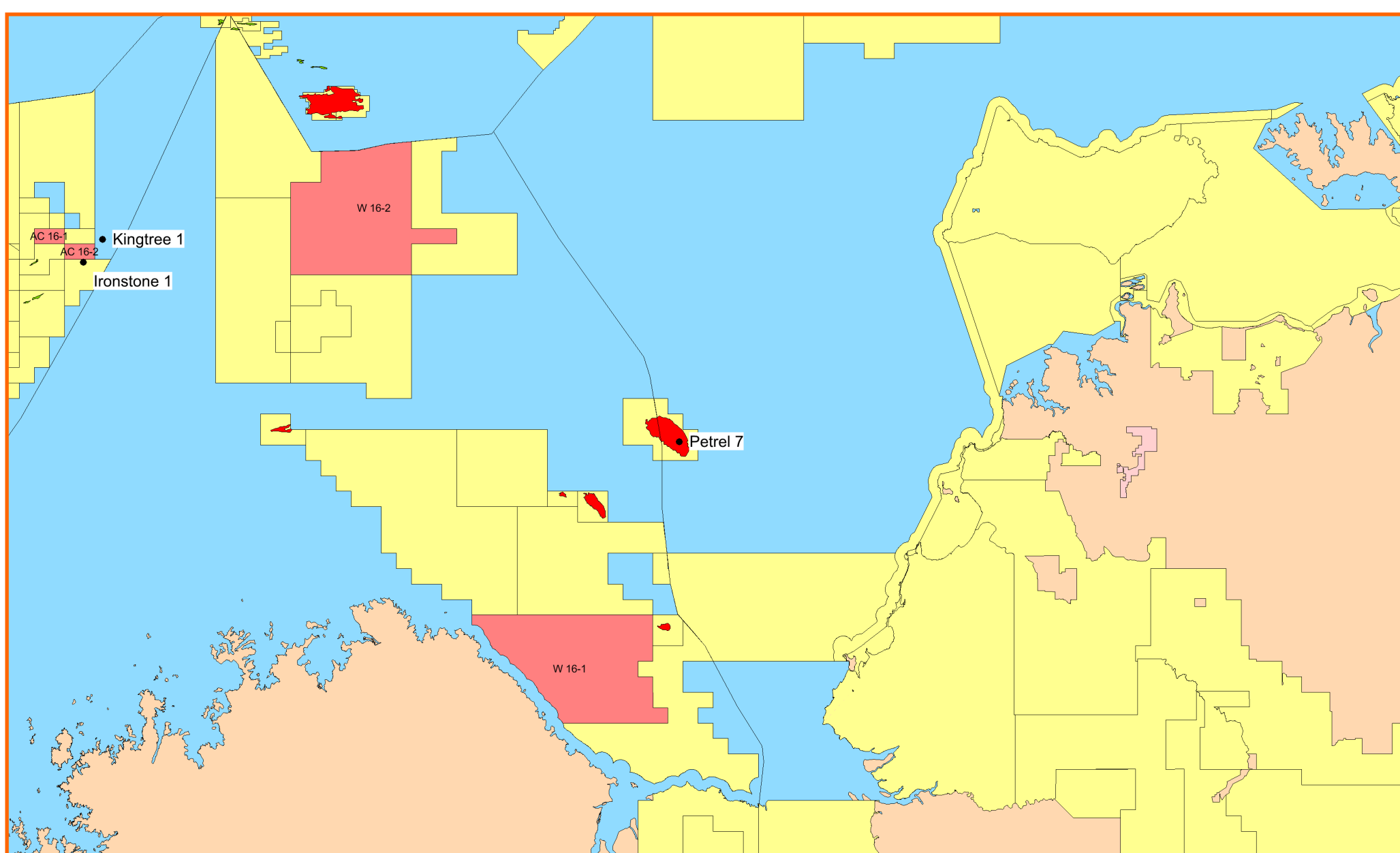
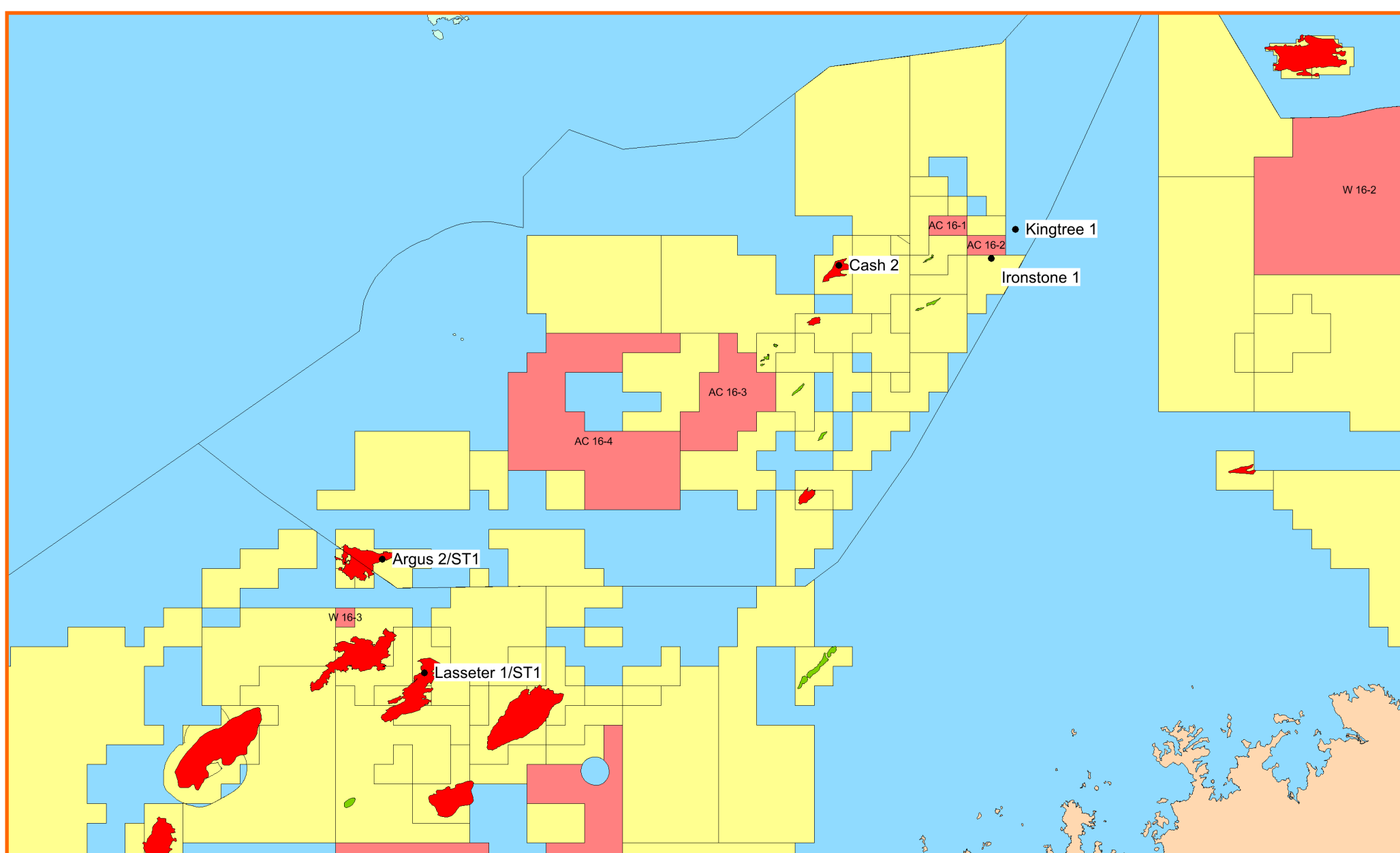
October releases:-

A) basic data

None

B) interpretive data

Ironstone-1 (12/10/2016)
Kingtree-1 (26/10/2016)
Petrel-7 (27/10/2016)



Note: no seismic data due for release in September — October 2016

