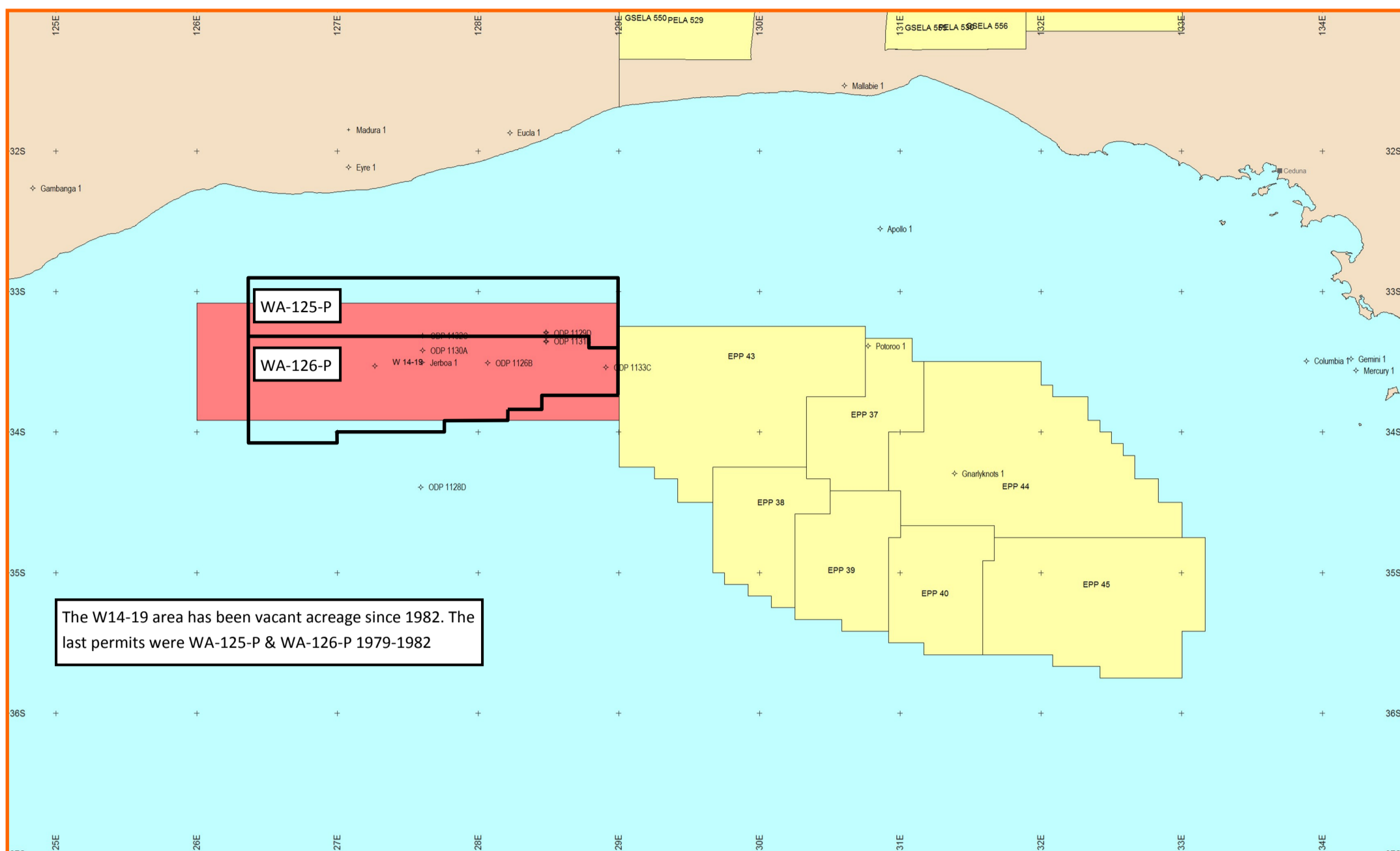




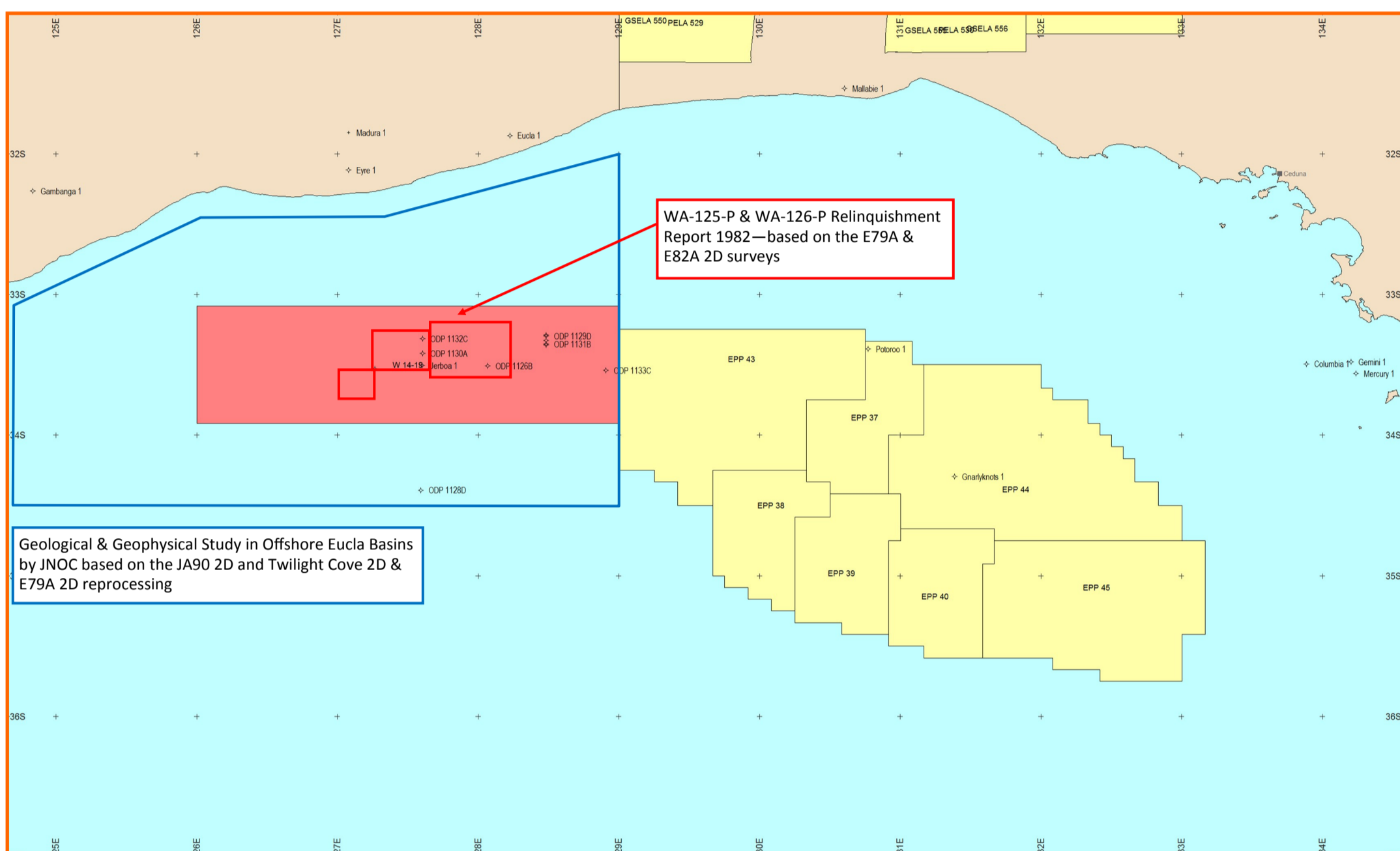
Eyre Sub-basin

(W14-19)

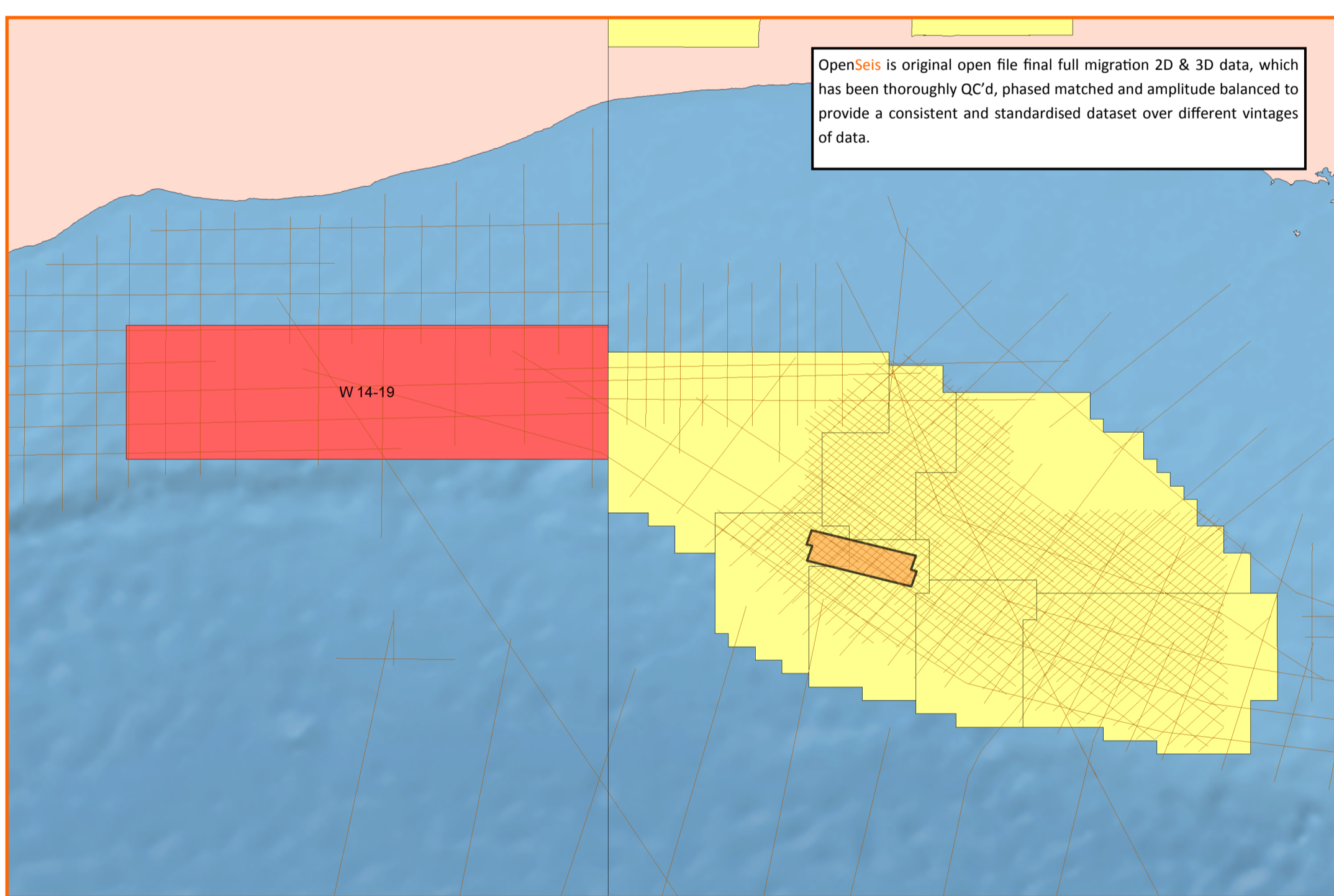
A) Historical Permits



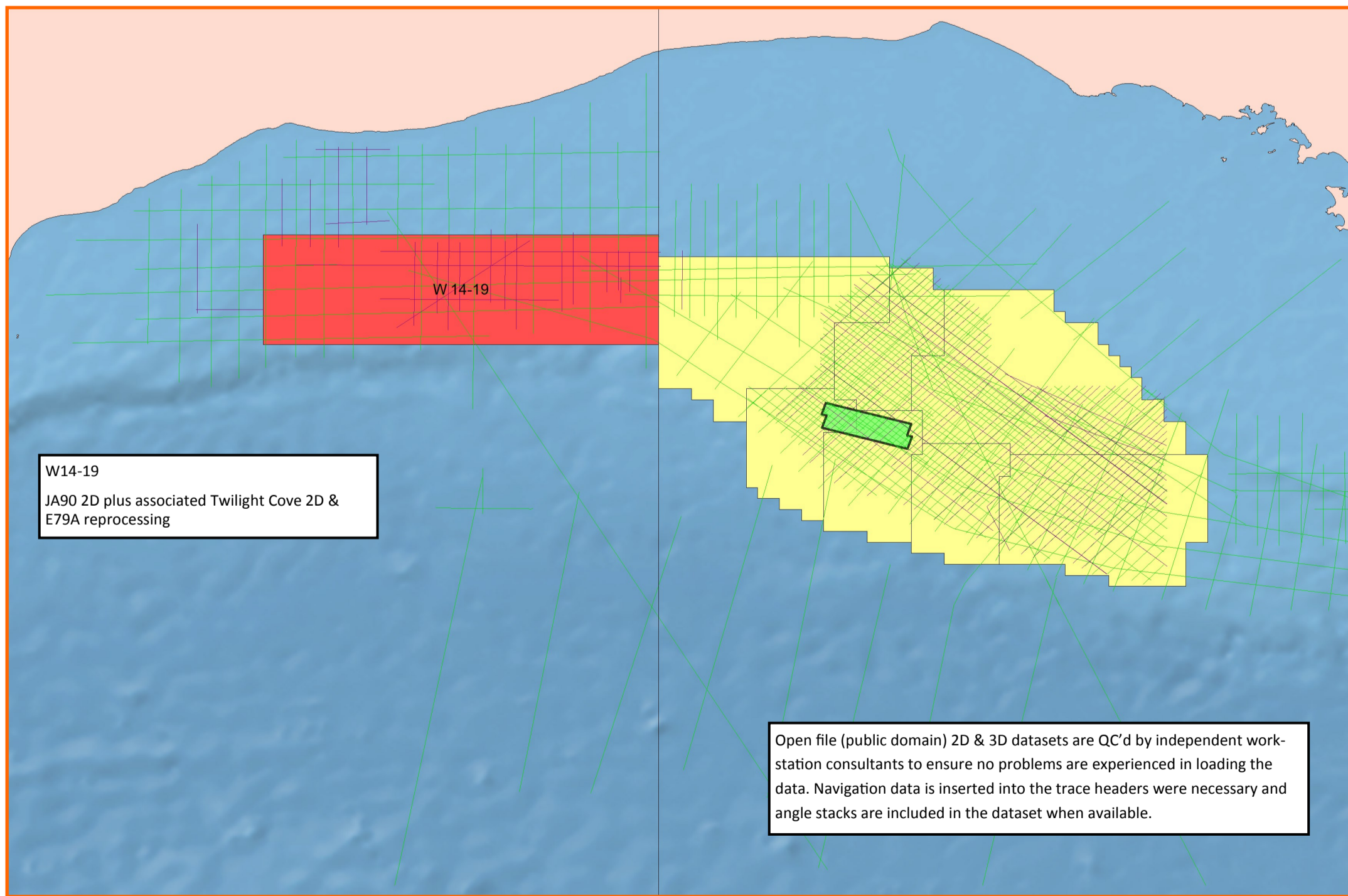
B) Seismic Interpretation Reports



C) OpenSeis 2D & 3D data (also see Eyre_Sub-basin_composite_seismic.pdf map)



D) Open File 2D & 3D data (also see Eyre_Sub-basin_composite_seismic.pdf map)



For further information and pricing please contact Mike Gray or Anthony Pearce:-

